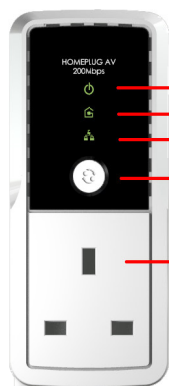


Easy Start Guide

A HomePlug AV from a Single Pack uses a random Private Network Name. To enable the device to communicate with an existing network, you need to use the Simple Connect button.

1 Check Contents



- Power LED
- Powerline Activity LED
- Ethernet Activity LED
- Simple Connect Button

AC Pass-Through
For UK plug-socket type, only BS1363 Plug can be plugged into the socket-outlet.

HomePlug AV



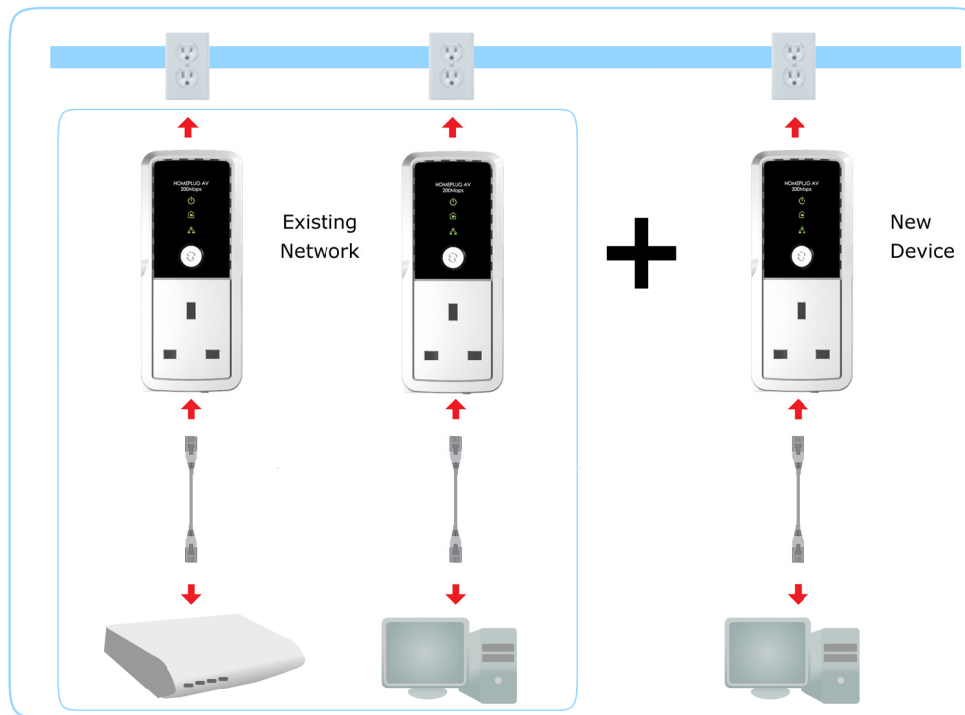
Easy Start Guide



Resource CD



Ethernet Cable



A HomePlug AV can be connected to any Ethernet-enabled device. This includes computers, routers, hubs, IP phones, IPTV set-top-boxes, gaming consoles, and printers.



Game Console



IP Phone



Printer



IPTV set-top box

2 Join an Existing Network Using Simple Connect

- ▶ Press Simple Connect on a HomePlug AV from an existing network for 2 seconds. Do not press Simple Connect for more than 2 seconds. After you release the button, the Power LED will blink. If the Power LED did not blink, you need to press Simple Connect again.

- ▶ Plug the new HomePlug AV near the existing network and then press Simple Connect for 2 seconds. Do not press Simple Connect for more than 2 seconds. After you release Simple Connect, the Power LED will blink.

Note: You need to press Simple Connect within 2 minutes after pressing Simple Connect from the other HomePlug AV.

- ▶ The LEDs on both devices will switch off and on twice to signify that they are searching for another device to pair with.

To confirm if the connection was established, check the LEDs. The Power LEDs and the Powerline Activity LED on all HomePlugs should be on. If the Powerline Activity LED is off, you need to redo the entire process again.

3 Connect to an Ethernet Device

Unplug the new HomePlug AV and then connect it to your Ethernet device using the Ethernet cable from the product package. After connecting the Ethernet cable, plug the new HomePlug AV directly to a wall outlet. An Ethernet-enabled device can be a router, computer, hub, gaming console, IP phone, network printer, or IP TV set-top box.

